

L e e m i n g L U T



**QUICKIE CREATIVES GUIDE**

Colour Space: Rec709 gamma 2.4  
LUT Version: Pro 4  
Guide Version: 2025.01.01

## INTRODUCTION

Thank you for purchasing Leeming LUT Pro™, the most accurate and professional Look Up Tables (LUTs) for your camera.

The LUTs have been carefully developed to get the maximum dynamic range and colour accuracy out of the supported profiles, giving you unparalleled Rec709 precision as well as perfect camera matching with other supported cameras in the Leeming LUT Pro™ range. Use them in conjunction with ETTR shooting principles and you will get the highest possible quality images out of the camera every time.

I am confident you will find these the most accurate LUTs for your camera. Anything less and I wouldn't have put my name on them!

Enjoy :)

Paul Leeming  
Director / Writer / Cinematographer / Colorist  
Visceral Psyche Films  
[www.visceralpsyche.com](http://www.visceralpsyche.com)

## LICENCE

You are granted a personal licence to use Leeming LUT Pro™ on three devices. For use with more devices, please contact Visceral Psyche Films for bulk discount pricing. You may not upload the LUTs anywhere, share them with other people or incorporate them into other LUTs for derivative use (i.e. making creative LUTs using Leeming LUT Pro™ as the underlying base), whether they be for sale or not. Please respect the work that has gone into the LUTs and support those supporting you.

## COMPATIBILITY

Leeming LUT Pro™ is compatible with any software or hardware device that supports a 33x33x33 cube LUT.

## REQUIREMENTS

1. Leeming LUT Pro 4 for your camera or footage shot with proper Rec709 colorimetry and linear gamma 2.4 (Leeming LUT Pro 4 creates this by default).
2. Spectrally neutral white or grey card, for white balancing the camera.
3. Leeming LUT Pro 4 – Quickie Creatives.

**NOTE:** Items highlighted in yellow have an adverse effect on LUT accuracy if changed away from the recommended values in this guide.

## GENERAL LUT USAGE

This guide assumes you are working from the baseline of using Leeming LUT Pro 4 for your camera to get your footage into the proper Rec709 gamma 2.4 space.

It is possible to use these LUTs with footage not processed with Leeming LUT Pro 4, however you should ensure that the footage has correct Rec709 colorimetry and a linear luma curve with a gamma of 2.4.

There is a separate LUT Installation Guide which you should have received a link to in your purchase email, which explains how to install the LUTs into your preferred editing software. You can also download the guide from the website if needed:

[www.LeemingLUTPro.com](http://www.LeemingLUTPro.com)

## INSTRUCTIONS FOR USE

1. The Quickie Creatives work best with reference Rec709 gamma 2.4 colorimetry and ETTR exposure such as that generated by the Leeming LUT Pro 4 – Rec709 Pure LUTs for various cameras. If you prefer a more contrasty, saturated version, use them after the Leeming LUT Pro 4 – Rec709 OTF LUTs, as those already have additional contrast and saturation added over the reference.
2. **Quickie Creatives should be placed AFTER the corrective Leeming LUT Pro 4 LUTs in the chain.** The order is important as placing the creative look before the corrective LUT will cause unintended issues. If you wish to grade before the corrective LUT, please ensure that the Quickie Creative LUT is still placed after the corrective one in your chain.
3. Pro Tip – If you are in pre-production it can be helpful to apply both the corrective Rec709 LUT along with the Quickie Creative together in camera in order for your art department to assess how different colours of clothing etc work, in order to optimise for the look. This can easily be done in DaVinci Resolve by having the two LUT nodes on a clip and then right clicking on the clip thumbnail and selecting Generate LUT to give you a new LUT with the two combined, for loading in camera.

## SAMPLE IMAGES AND VIDEO

There are currently ten look LUTs in the pack. A brief description of each is listed on the next page, along with a sample image of the overall effect it has on your footage.

For a detailed overview of the LUTs I recommend watching my introductory video:

[www.LeemingLUTPro.com/#quickies](http://www.LeemingLUTPro.com/#quickies)

## THE LOOKS

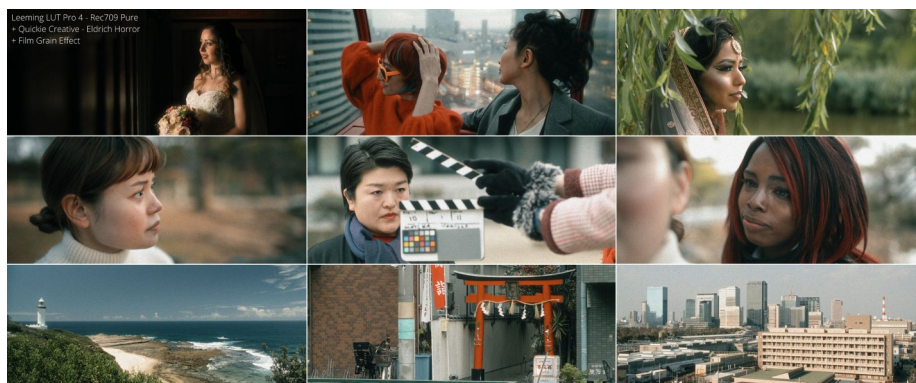
**Adventurous Childhood** Explore without limits (just be back in time for dinner!). Pleasing contrast and colour that recalls the best of 80's cinema.



**Celluloid Stasis** Low contrast, Cinestill-type colour palette, with compressed skin tones on the reddish side of neutral and muted greens.



**Eldrich Horror** Green-soaked atmosphere with low saturation and medium contrast, with accentuated blood and skin tones.



## Frosted Nightmare

High contrast, bleach bypass look with low saturation and a slight emphasis on skin tone separation.



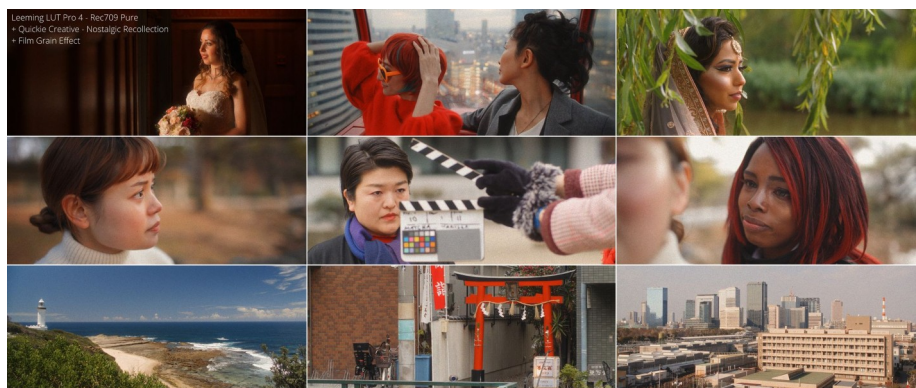
## Golden Epoch

Go back to the 70's with this low contrast, velvety rendition of skin tones and slightly pushed reds.



## Nostalgic Recollection

Warm, analog tones evoking old film stocks. Rich, healthy skin tones and slightly pushed blues.



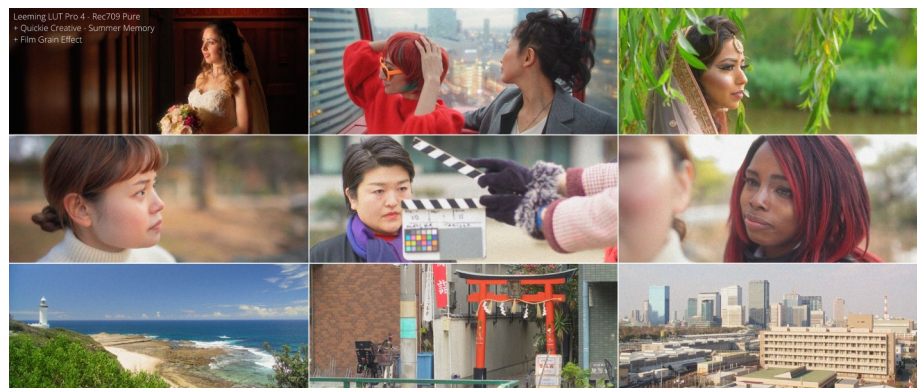
## Solitary Skin

Skin tones and facial features in colour with the rest desaturated to black and white.



## Summer Memory

High key summer beach warmth with bright, poppy colour palette. Slightly overexposed film stock with highlights retained.



## Tinseltown Dyad

Medium contrast teal and orange palette, keeping accurate skin tones while pushing the rest of the spectrum towards cyan.



## Tintype Noir

Medium contrast monochrome with brooding skies, deep shadows and slightly burnished skin tones.



## GUIDE CHANGELOG

2025.01.01 Initial release.